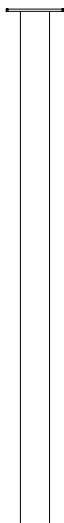


A noga x 1 szt | leg x 1 pc



B wkładka x 1 szt | insert x 1 pc



C regulator x 1 szt | adjustable feet x 1 pc



D wkręt x 4 szt | sharp screw x 4 pcs



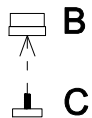
INSTRUKCJA MONTAŻU | ASSEMBLY INSTRUCTION

ST 506

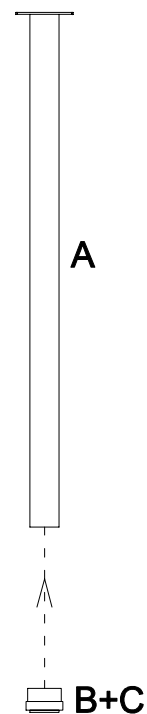


2019.11

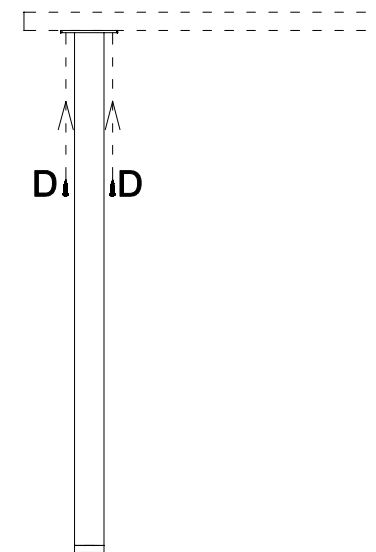
1



2



3



potrzebne narzędzia | necessary tools

