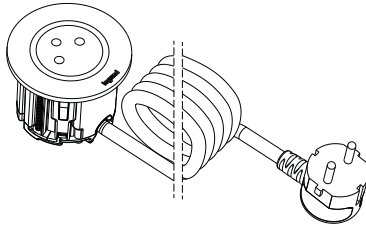
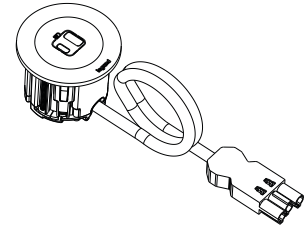


**Incara™
 Disq 60**

**Cat. No(s): 6 547 20/21/22/23/30/31/32/33/39 - 6 547 99 -
 6 547 20F/21F/22F/23F/30F/31F/32F/33F - 6 549 86/87**



6 547 20/21/22



6 547 30F/ 31F/32F

1. USE

Desk, partition, soft seating or locker, Incara™ Disq 60 adapts to any environment to provide power or USB A+C 15W, as close to the user as possible. Available in white, black, metal or with a cover, Incara™ Disq 60 is an aesthetic and discreet solution that is quick and easy to install.

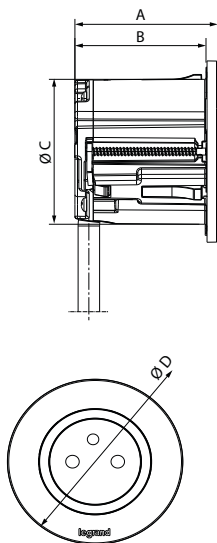
2. RANGE

Incara™ Disq 60 equipped with	Standards	2 m cord with 2 P+E plug				0.5 m cord with Wieland® plug GST18i3			
		White*	Black*	Metal*	Metal cover	White*	Black*	Metal*	Metal cover
1x 2P+E	FR/B	6 547 20	6 547 21	6 547 22	6 547 23	6 547 20F	6 547 21F	6 547 22F	6 547 23F
1 USB A+C 15W	-	6 547 30	6 547 31	6 547 32	6 547 33	6 547 30F	6 547 31 F	6 547 32F	6 547 33F

* Ring finishes (4 additional colours available on demand)

3. DIMENSIONS

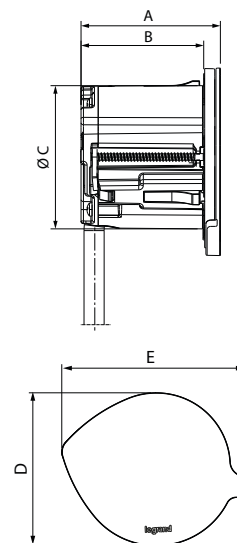
■ 3.1 Incara™ Disq 60 with ring
 cat. nos 6 547 20/21/22/20F/21F/22F/30/31/32/30F/31F/32F



A	B	C	D
54.5	50	59	74

3. DIMENSIONS (cont.)

■ 3.2 Incara™ Disq 60 with cover
 cat. nos 6 547 23/23F/33/33F

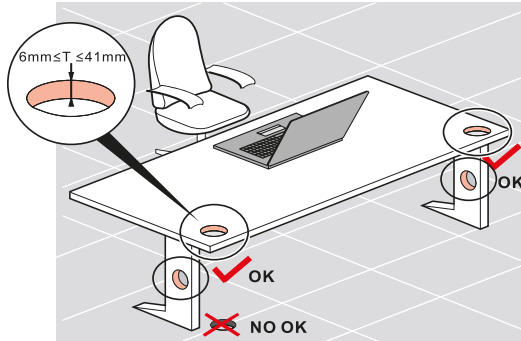


A	B	C	D	E
57	50	59	77	91

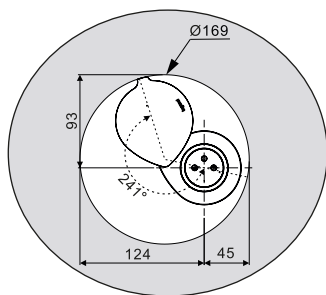
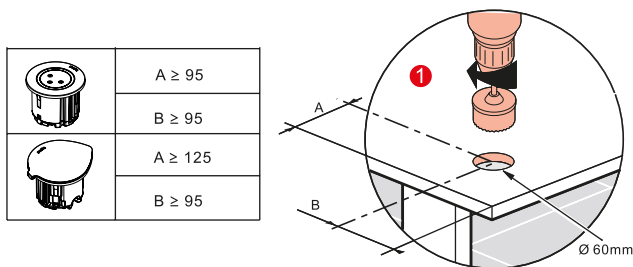
4. INSTALLATION

Must not be fitted on the floor.

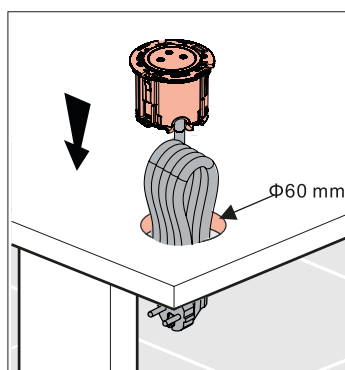
■ **4.1 Into the desk**



4.1.1 Drilling dimensions and positioning

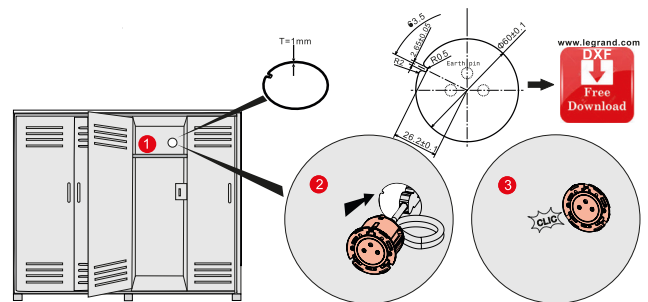


4.1.2 Insertion



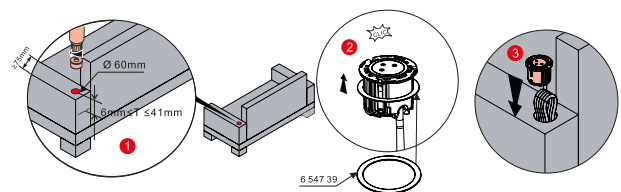
4. INSTALLATION (cont.)

■ **4.2 Into metal furniture such as metal locker**



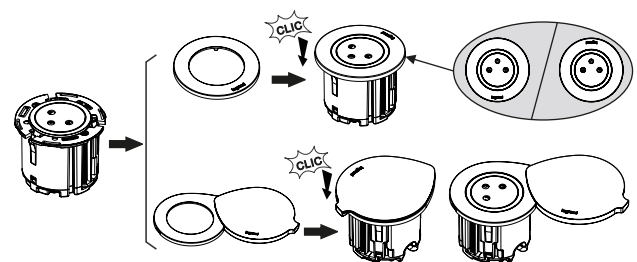
Metal = 1 mm max

■ **4.3 Into soft seating**



Use of the accessory cat. no 6 547 39 necessary to ensure a good fit of the product in the seating covering.
Use of products with cover is not recommended for this type of installation.

■ **4.4 Ring/cover installation**



5. TECHNICAL CHARACTERISTICS

■ **5.1 Mechanical characteristics**

Resistance to impact: IK 07

■ **5.2 Material characteristics**

Metal ring and cover: brushed aluminum and varnish
Black & white ring and housing: Polycarbonate UL94V0


5. TECHNICAL CHARACTERISTICS (cont.)

■ **5.3 Electrical characteristics**

5.3.1 P+E plugs characteristics

16A-250V~ 3680W Max
Frequency: 50/60 Hz

5.3.2 USB Charger characteristics (LXX15)

Trade mark	
Address	128, av. du Maréchal-de-Lattre-de-Tassigny - 87045 LIMOGES Cedex Tel. : 0 (+33) 5 55 06 87 87 Fax : 0 (+33) 5 55 06 88 88 www.legrand.com
Input voltage	110-240V
Input AC frequency	50-60Hz
Output voltage	5,0V
Output current	3,0A
Output power	15,0W
Average active efficiency	83,9%
Efficiency at low load (10%)	83,3%
No-load power consumption	0,06W

5.3.3 Cords characteristics

Cable type	Cat. nos
H05VV-F 3G 1.5mm ²	6 547 20/21/22/23 6 547 20F/21F/22F/23F 6 549 86/87
H05VVH2-F 2x0.75mm ²	6 547 30/31/32/33
H05VV-F 2x1mm ²	6 547 30F/31F/32F/33F

■ **5.4 Climate characteristics**

Operating temperature : from -5°C to +35°C
Storage temperature : from -10°C to +70°C

6. CLEANING

Superficial cleaning with a soft cloth. Do not use abrasive products or detergents

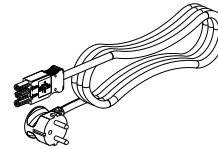
Caution: Always test before using other special cleaning products

7. STANDARDS & APPROVALS

Compliant to NF C61-314 and IEC 60884-1
USB charger USB compliant to IEC 62368-1

8. ACCESSORIES

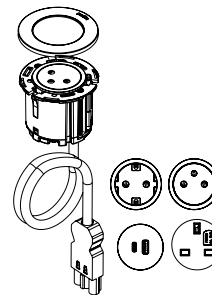
■ **8.1 Extension cords cat. nos 6 549 86/87**



Cat. nos	Designation
6 549 86	2 m Wieland® GST18i3 cord/2 P+E plug
6 549 87	3 m Wieland® GST18i3 cord/2 P+E plug

■ **8.2 Protective case for Wieland® GST18i3 connector cat. no 6 547 99**

for cat. nos 6 547 20F/21F/22F/30F/31F/32F



Protective case allowing compliance with NFC 61-314 standard, which requires an housing covering the installation couplers. Access for connection or disconnection of these couplers must be possible only using a tool (e.g. screwdriver).

