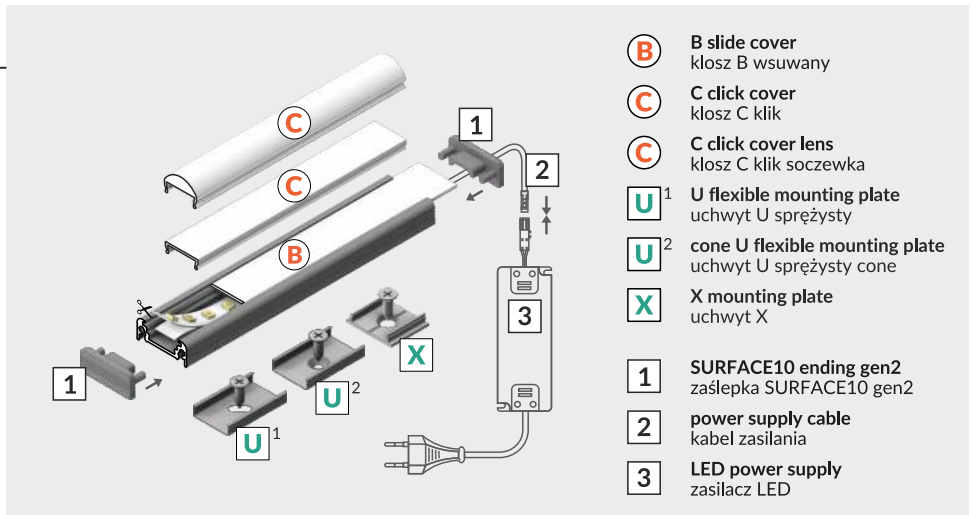
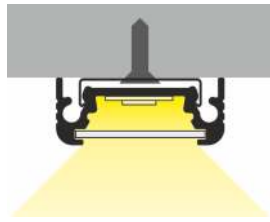
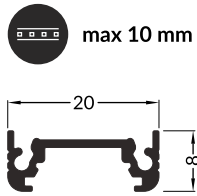
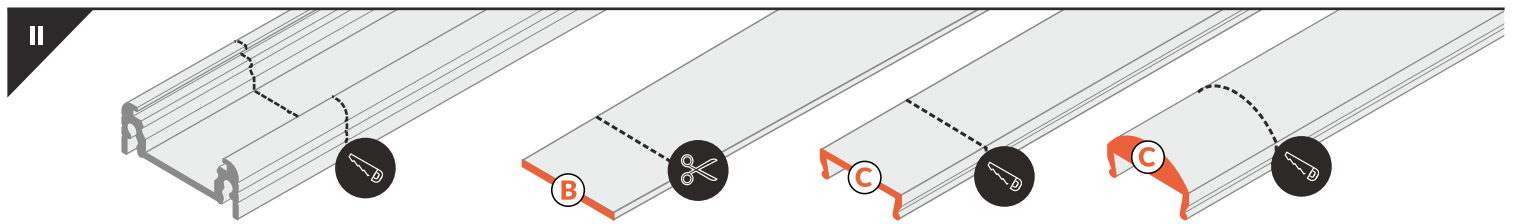
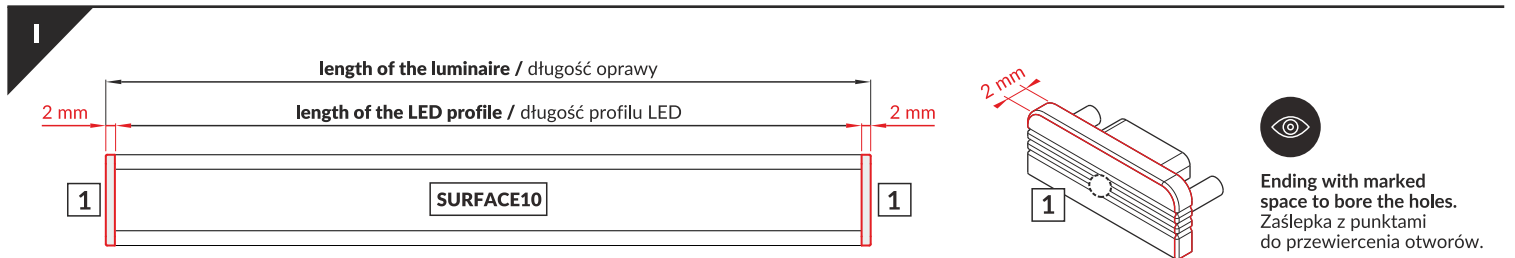
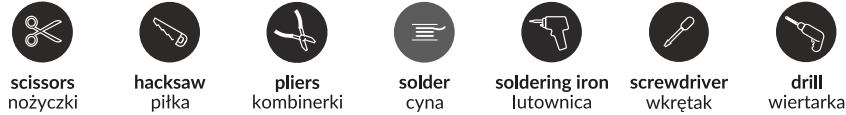


# SURFACE10 BC/UX

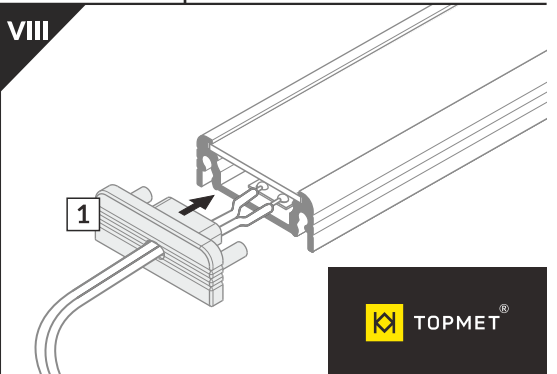
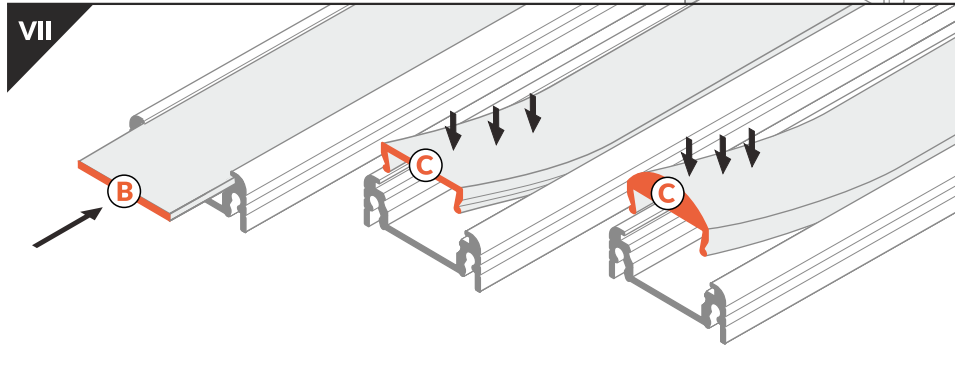
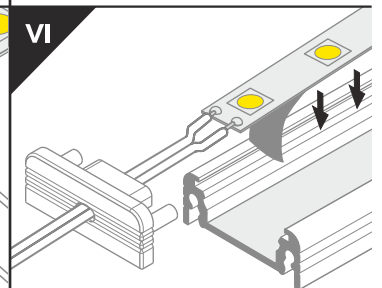
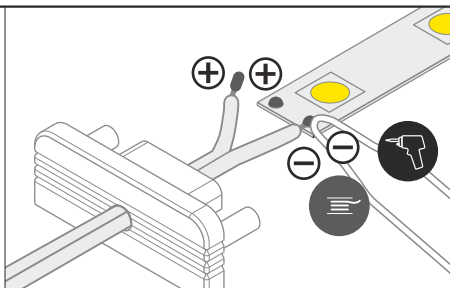
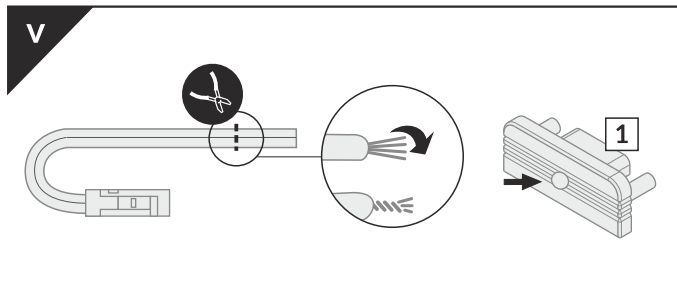
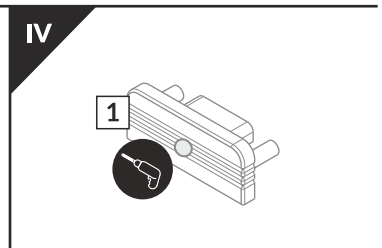
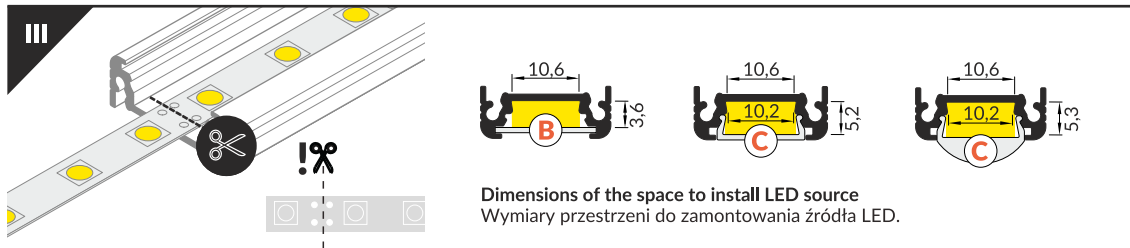
SURFACE PROFILE / PROFIL NAWIERZCHNIOWY



- B** B slide cover  
klosz B wsuwany
- C** C click cover  
klosz C klik
- C** C click cover lens  
klosz C klik soczewka
- U<sup>1</sup>** U flexible mounting plate  
uchwyt U sprężysty
- U<sup>2</sup>** cone U flexible mounting plate  
uchwyt U sprężysty cone
- X** X mounting plate  
uchwyt X
- 1** SURFACE10 ending gen2  
zaślepka SURFACE10 gen2
- 2** power supply cable  
kabel zasilania
- 3** LED power supply  
zasilacz LED

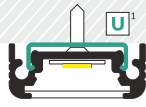


The length of the cover is equal to the length of the profile. / Długość klosza równa jest długości profilu.

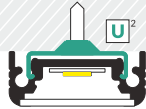


## IX MOUNTING / MONTAŻ

**U flexible mounting plate**  
uchwyt U sprężysty



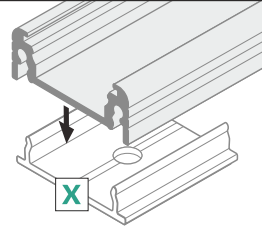
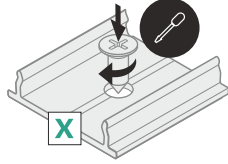
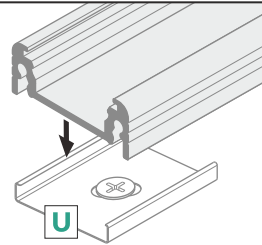
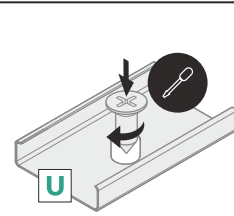
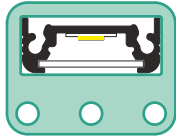
**cone U flexible mounting plate**  
uchwyt U sprężysty cone



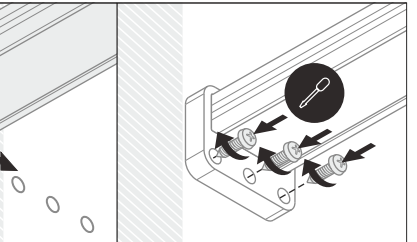
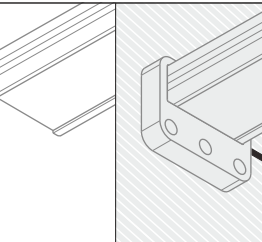
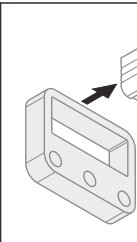
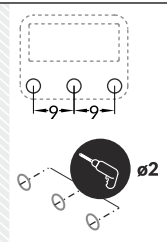
**X mounting plate**  
uchwyt X



**SURFACE10 simple holder**  
uchwyt SURFACE10 prosty

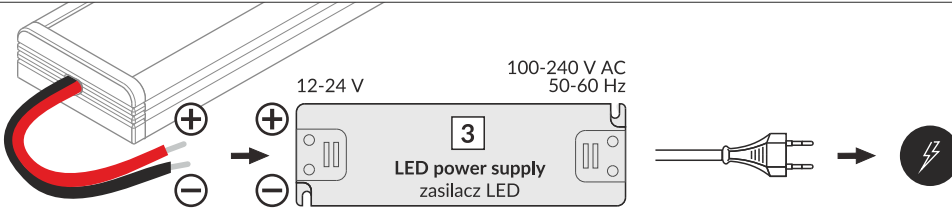


Repeat the following steps also for the other end of the profile. Length of the LED luminaire = mounting space - 2 mm  
Poniższe kroki wykonać dla obu końców profilu. Długość oprawy LED = przestrzeń montażowa - 2 mm



Other mounting possibilities: with mounting glue or mounting tape, with screws  
Pozostałe możliwości montażu: na klej lub taśmę montażową, na wkręty

## X POWER SUPPLY / ZASILANIE

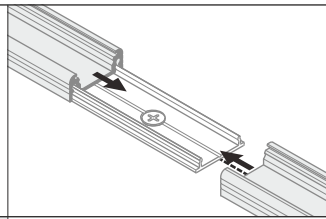
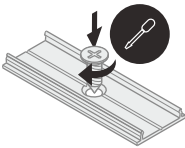


## OPTIONAL ACCESSORIES / AKCESORIA OPCJONALNE

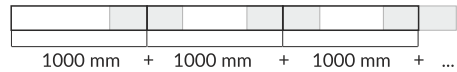


Mount the connector before installing the LED strip. In case there is no possibility of sliding the profile into connector it is recommended to mount with screws, directly to the mounting surface / Łącznik montować przed instalacją taśmy LED. W przypadku braku możliwości wsunięcia profilu w element łączący zalecany jest montaż na wkręty, bezpośrednio do powierzchni montażowej

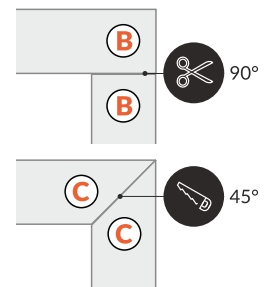
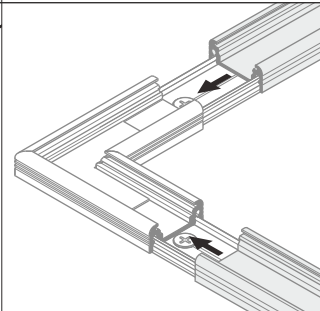
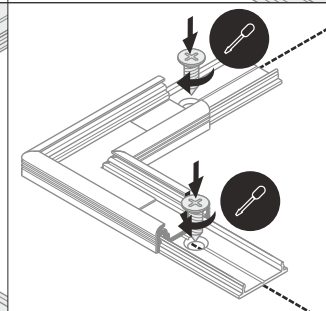
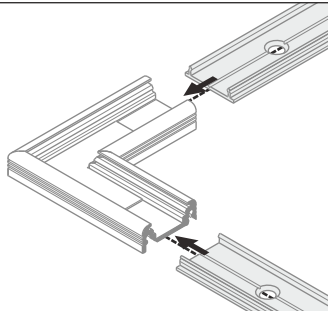
**X connector 180 deg**  
łącznik X 180 st



X connector may be used to make extra long profiles by connecting multiple profiles.  
Łącznik X może być użyty do stworzenia pojedynczego bardzo długiego profilu.



**SURFACE10 connector 90 deg**  
łącznik SURFACE10 90 st



## ACCESSORIES / AKCESORIA

power switches, controller + remote, movement sensors / włączniki, sterownik + pilot, czujniki ruchu

TOPMET Light Kłosowicz Wiśniewski i Wspólnik Sp.J.

Ostrowska 354 | 61-312 Poznań | POLAND  
tel.: +48 61 872 75 00  
www.topmet.pl/en

07.2020

 TOPMET®